

## ■ ANT327 Fine Bubble Cone Type Diffuser -

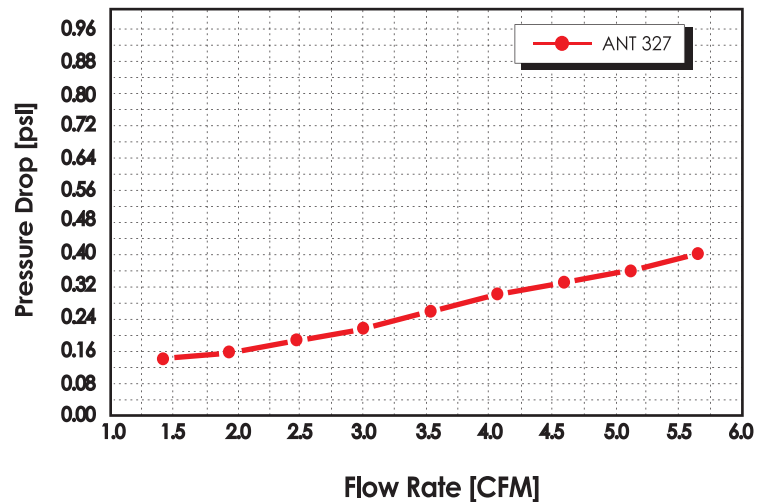
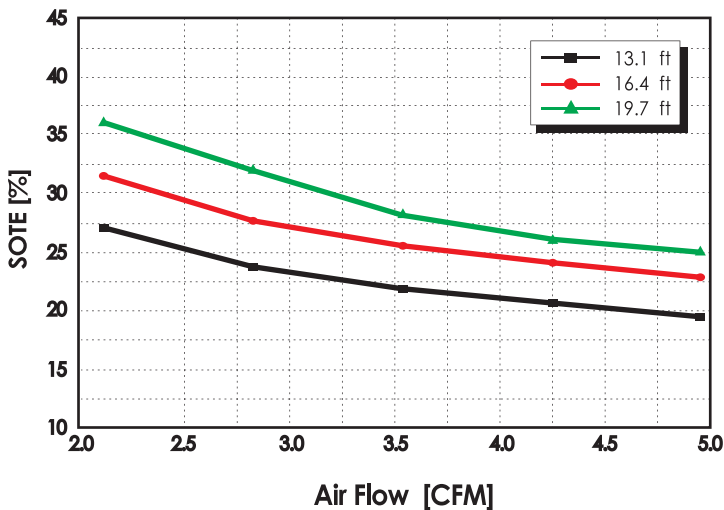
- Introducing the ANT Cone Type Diffuser line designed to provide fine and coarse bubble aeration in wastewater treatment plants. These uniquely designed diffusers are the latest advancement in diffused aeration technology. They feature stacked ABS plastic cones molded to nest together with drilled orifices underneath the surface of each level to provide a widely dispersed air pattern around the diffuser. An internal check valve prevents any backflow.
- The ANT327 All Plastic diffuser now offers a new choice when selecting fine bubble diffusers. When compared to membrane and ceramic diffusers, the ANT327 is non-clogging, more durable, less maintenance and can withstand compressed air heat. A wise selection for new or replacement applications.



**ANT327**  
(Fine Bubble Diffuser)

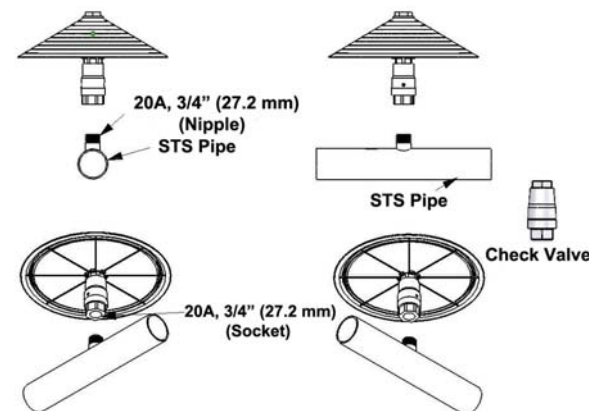
*Check valve prevents backflow*

## ■ Performance curves



## ■ Design Condition

- Air flow rates : 2.5 ~ 4.6 SCFM  
 ANT240 - 2.8 ~ 4.2 SCFM / DIFFUSER  
 ANT327 - 2.8 ~ 4.6 SCFM / DIFFUSER
- Diffuser diameter : ANT240 - Ø 9.4 inch / 240 mm  
 ANT327 - Ø 13 inch / 327 mm
- Head loss : less than 0.213 PSI / DIFFUSER



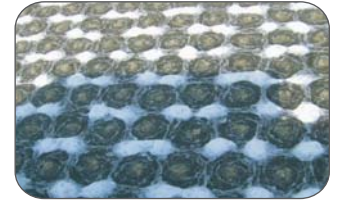
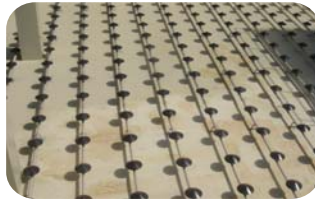
## ▣ **ANT240 Coarse Bubble Cone Type Diffuser –**



- The ANT240 Coarse Bubble Cone Diffuser represents a major advancement in coarse bubble diffuser design and performance. This Cone shaped diffuser offers performance not available with other designs. Due to the unique cone shape and 9" diameter the diffuser issues air all around the exterior and along the outer slope of the entire diffuser which maximizes mixing and minimizes bubble coalescing while maintaining effective oxygen transfer.

### ▪ **Complete Aeration Package**

- ECO-ANT21 Offers a complete package of services and materials for diffused aeration systems. Services include a professional engineering staff using traditional design parameters supported by the latest in computer programming to optimize designs. Aeration package designs have piping layouts that assure proper mixing as well as promoting the maximum oxygen transfer. Piping layouts are also designed to minimize pipe and support stand costs as well as installation costs. Complete piping systems including support stands are constructed of stainless steel or PVC pipe. Blower packages of various types are also available.



### ▪ **Worldwide Installations**

- LG-Phillips Electronics WWTP
- Saudi Arabia Dammam STP
- Incheon Hakik STP
- Hungary Budapest WWTP
- Samsung Everland WWTP
- Gimpo STP
- Vietnam Ho Chi Minh WWTP
- Hanhwa petrochemistry WWTP
- Non San STP
- Canada Montreal WWTP
- Gunsan STP
- Ulsan Youngyeon STP
- Thailand Bangkok WWTP
- Paju WWTP
- Jeongsan WWTP
- Korea Electric Power Central Development WWTP
- Seoul Jungnang WWTP
- Shin-ho paper WWTP
- POSCO WWTP
- Ulsan Onsan STP
- Boryung WWTP
- Yilsan STP



ECO-ANT21 Corporation

20280 S. Vermont Ave. Suite 200, Torrance, CA 90502

+1.310.929.5767 • +1.310.650.9333 • ant@antdiffuser.com • www.antdiffuser.com