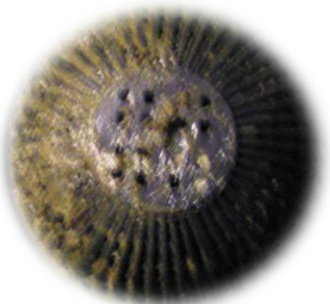




HEFMR (High Efficiency Fluidized Media Reactor)



High Efficiency that Fluidized Media has a large surface area that provides optimal environmental contacts for bacteria, air, water, and polluted substance.

ANT Media has a large surface where bacteria can thrive. typically growing in formations of open pores (50~150 μm). The Media is designed and structured anaerobic bacteria to grow inside of media, and for aerobic bacteria to grow on the outer surface.

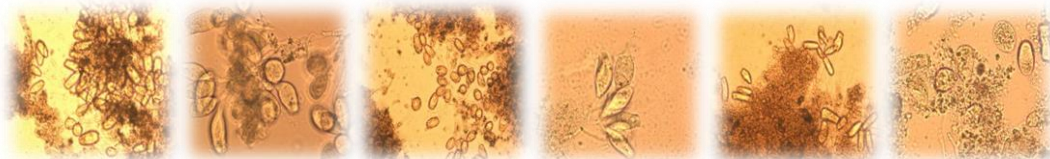
The support material composed of formed rubber floats, and stays above water, which allows minimal contact between bacteria and polluted substances. ANT Media is made by material with similar properties (0.92~0.96kg/dm³) as polyethylene. ANT Media maximizes the floating area when in the water.

Outer surface of the Media is made by ABS, which has strong anti-corrosion, properties and optimum gravity of 1 kg/dm³. It is also located and designed not to cause friction between the cage and bio-chip inside. As a result, the Media has a permanent life span.

ANT Media Specification

Type	Material	Density (g/cm ³)	Specification (mm)	Cavity ratio (%)
Media	ABS, Formed Polyethylene	0.9~1.1	Diameter : 160 Height : 130	91.5 ~ 94

Bacteria on ANT Media



Mastigophora	Cibtes		Metazoa
Bodo	Vorticella sp	Zootharnmium sp	Aeolosoma
Monas	Epistylis sp	Aspidisca sp	Rotaria
Peranema	Opercularia sp	Carchesium sp	Colurella

ECO-ANT21 CORPORATION

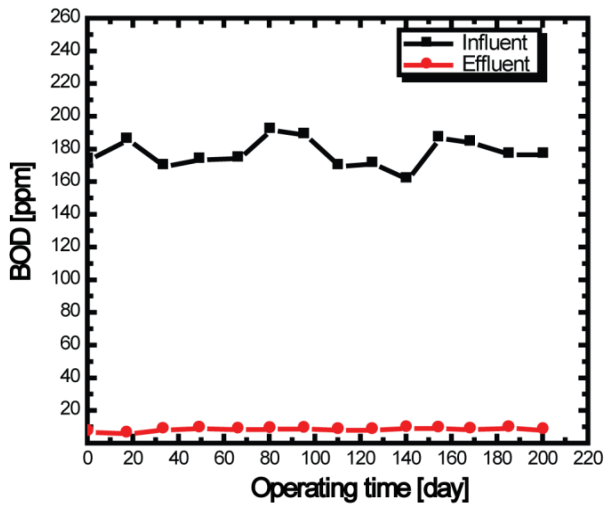
20280 S. VERMONT AVE. SUTIE 200, TORRANCE, CA 90502

1.310.929.5767 1.310.650.9333 ant@antdiffuser.com www.antdiffuser.com

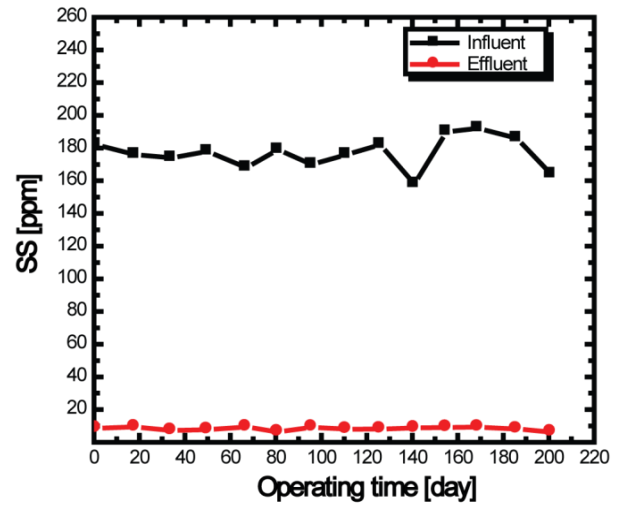


HEFMR (High Efficiency Fluidized Media Reactor)

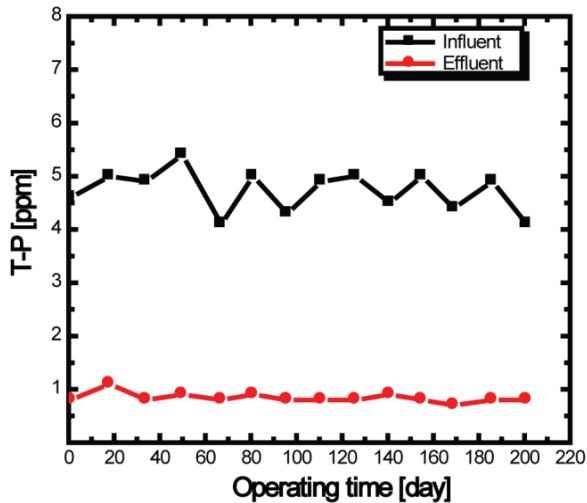
BOD test result



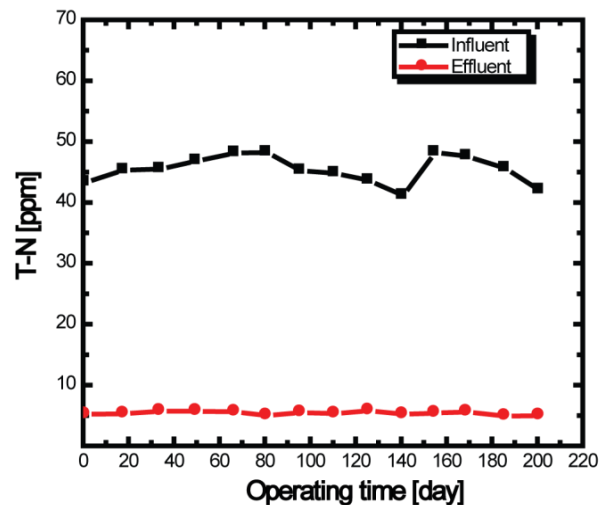
SS test result



T-P test result



T-N test result



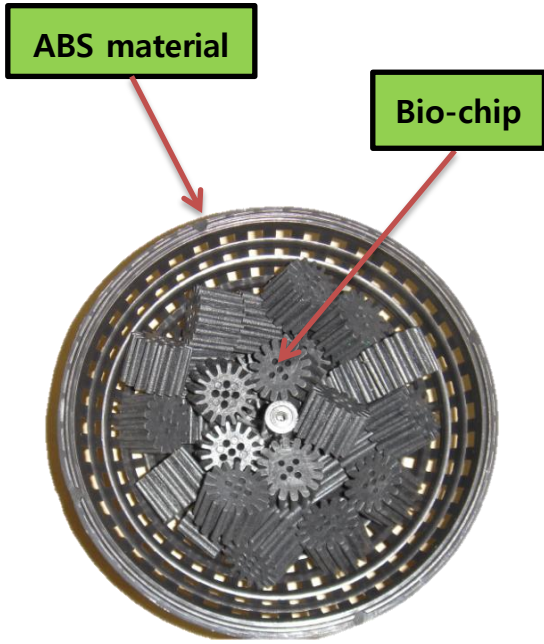
ECO-ANT21 CORPORATION

20280 S. VERMONT AVE. SUTIE 200, TORRANCE, CA 90502

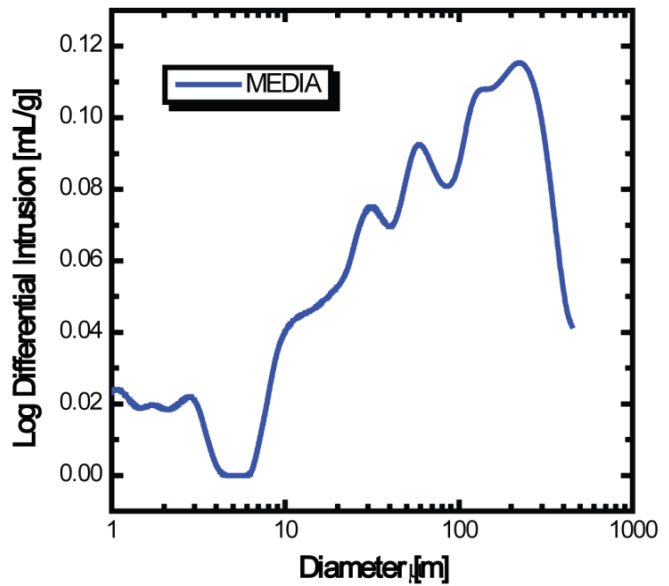
1.310.929.5767 1.310.650.9333 ant@antdiffuser.com www.antdiffuser.com



HEFMR (High Efficiency Fluidized Media Reactor)



Size of stoma



Surface of media (40x zoom in)



ECO-ANT21 CORPORATION

20280 S. VERMONT AVE. SUITE 200, TORRANCE, CA 90502

1.310.929.5767 1.310.650.9333 ant@antdiffuser.com www.antdiffuser.com